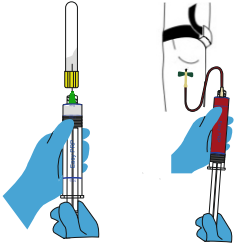


EasyPRP Preparation Guide

Please Note !

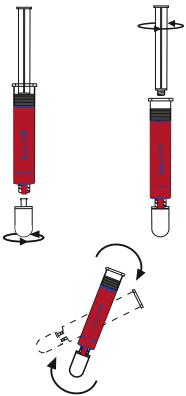
During the preparation of Platelet Rich Plasma, keep the Easy PRP syringe in an upright position unless otherwise stated.

Blood collection



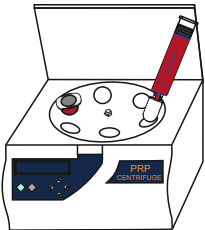
- (1). Take 1,5 ml Anti-Coagulant into the Easy PRP syringe.
- (2). Take 8,5 ml blood from the patient by using scalp vein set(butterfly set). Draw the lower part of the piston to the level of 10 ml)

Attaching the RBC collector



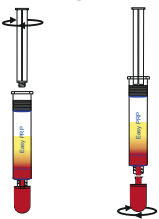
- (3). Attach the RBC(red blood cell) collector firmly into the Easy PRP syringe.
- (4). Remove the plunger from the Easy PRP syringe by turning it counterclockwise.
- (5). Invert the Easy Prp syringe gently several times.

1st centrifugation



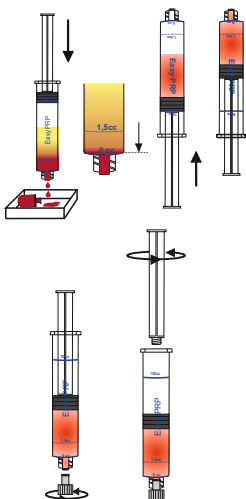
- (6). Insert the Easy PRP syringe into the centrifuge.
- (7). Insert the counterbalance into the centrifuge ,always opposite from the Easy PRP syringe.(If 1 or 3 Easy PRP syringes are used.)
- (8). Set up the program : **RCF:1200 G**
Time: **5 Minutes**
Start by pushing «START»

Separating the RBC (Red Blood Cell) collector



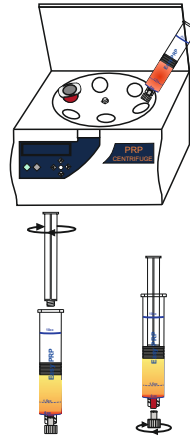
- (9). Remove the syringe from the centrifuge and connect the plunger back into the Easy PRP syringe by turning it clockwise.
- (10). Carefully separate the RBC collector from the Easy PRP syringe by turning it clockwise.

Discharge of remaining red blood cells and the use of Buffy Coat



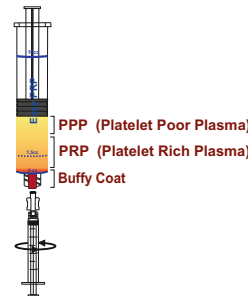
- (11). Discharge the remaining RBC from the Easy PRP syringe by pushing down the plunger.
PLEASE NOTE:
RBC part pushed down to 0 ml line= **with Buffy Coat**
All RBC removed (only clear serum)= **without Buffy Coat**
(Take a firm hold of the plunger and the Easy PRP syringe and press firmly but carefully to prevent too much of RBC to be discharged.)
- (12). Turn the Easy PRP syringe up-side down and release the remaining air from the Easy PRP syringe by pushing the content up to the tip.
- (13). Remove the plunger and plug the white cap firmly on the tip of the Easy PRP syringe

2nd centrifugation



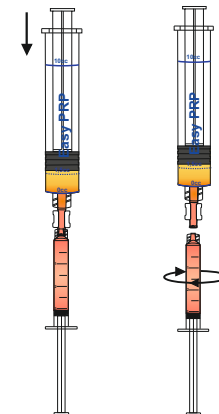
- (14). Insert the Easy PRP syringe and counterbalance into the centrifuge.
- (15). Set up the program: **RCF:1200 G**
Time: **10 Minutes**
Start by pushing «START»
- (16). Remove the syringe from centrifuge and connect the plunger back into the Easy PRP syringe.
- (17). Carefully separate the white cap from the Easy PRP syringe.

Extraction



- (18). Put the syringe coupler into Easy PRP syringe.
- (19). Connect the 3 ml syringe.

Platelet Rich Plasma (PRP) completion



- (20). PRP can be transferred to the other syringe by pushing the Easy PRP plunger down-wards.
- (21). PRP is ready to be used.

USAGE RESTRICTIONS

- (1). The practitioner is to be thoroughly familiar with the equipment and the procedure prior to using the product.
- (2). The patient is to be made aware of general risks associated with treatment.
- (3). PRP and Platelet Poor Plasma [PPP] concentrates are to be prepared from fresh blood and used rapidly.
- (4). The product cannot be used to other dosing or application.
- (5). Single use device, do not reuse to prevent contamination and infections.
- (6). Do storage at room temperature away from high temperature, high humidity and direct sunlight.
- (7). Do not disassemble, repair or modify the product.
- (8). Sterility guaranteed unless package has been opened or damaged.
- (9). The expiration date is 5 years from sterilizing date.
- (10). The scale mark is within tolerance (1.5ml±5%, 10ml±4%).
In case of more accurate injection, use other method.